



Garbage Separation and Disposal

Niseko Town Council Citizens' Affairs Division
Public Hygiene
TEL 0136-44-2121 FAX 0136-44-3500 NISEKO
Please bring your garbage to the designated waste collection points before **8AM** on garbage day.

Burnable Garbage **Green Bag** **Mon./Thu.** (depending on the region) **Weekly**

Burnable waste includes paper, cloth, wood, and leather products.



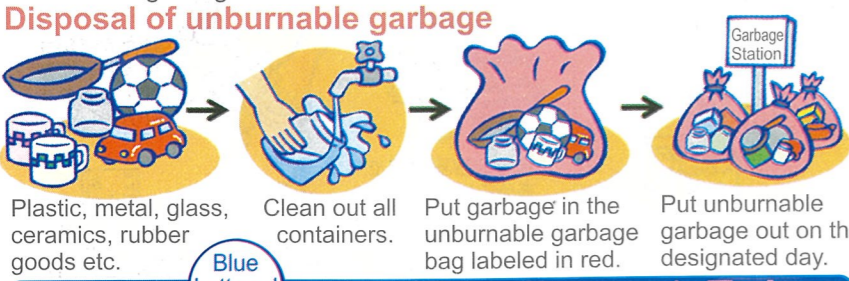
2015.3. Start Sanitary Waste

Sanitary waste includes nappies, feminine products, and pet toilet sanitary sheets.



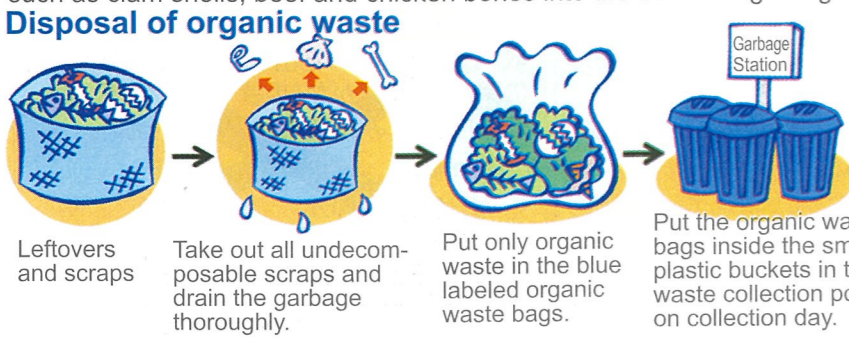
Unburnable Garbage **Red Lettered Bag** **2nd and 4th Wed./Fri.** (depending on the region) **Biweekly**

Unburnable garbage includes mostly plastic goods, metal goods, glass bottles (all with labels removed), ceramics, glass goods, rubber goods etc. Please ensure not to leave food and organic matter mixed into unburnable garbage.



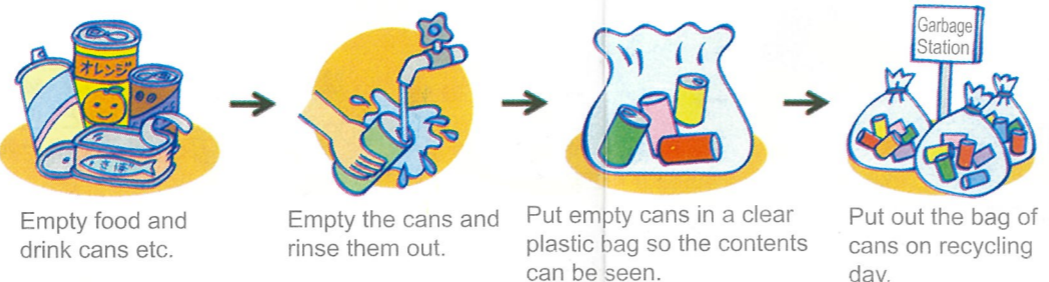
Organic Waste **Blue Lettered Bag** **Mon. and Thu./Tue. and Fri.** (depending on the region) **Twice Weekly**

Organic waste includes leftovers and food scraps. Please put hard items such as clam shells, beef and chicken bones into the burnable garbage.

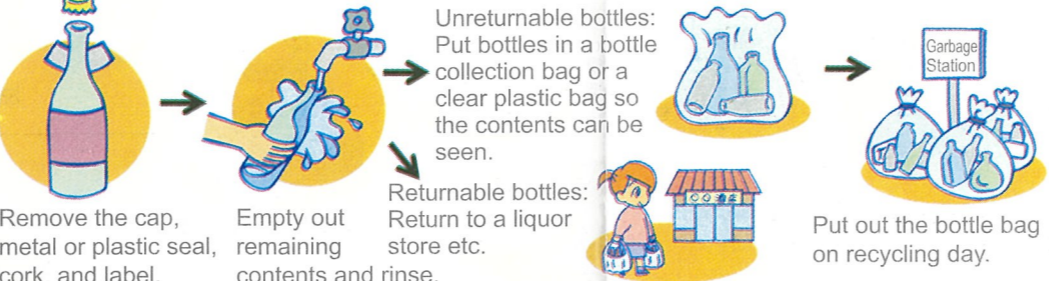


Recycling **Tue./Wed./Thu.** (depending on the region) **Weekly**

Disposal of cans Iron and aluminum drink cans, food tins, spray cans (please poke a hole in them and remove all contents), milk cans, pet food cans



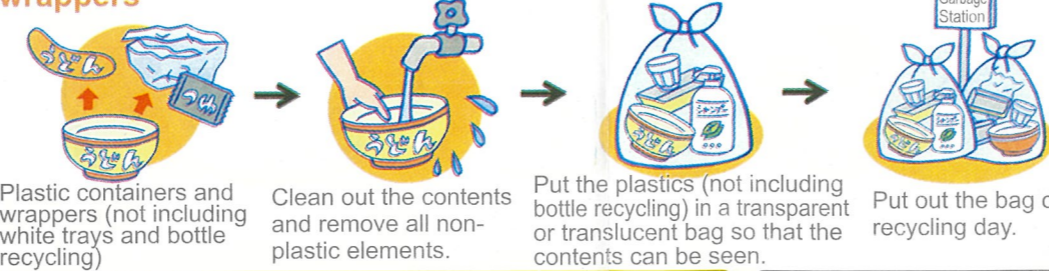
Disposal of glass bottles Empty glass drink bottles, sauce and spice bottles, jam jars, energy and health drink bottles



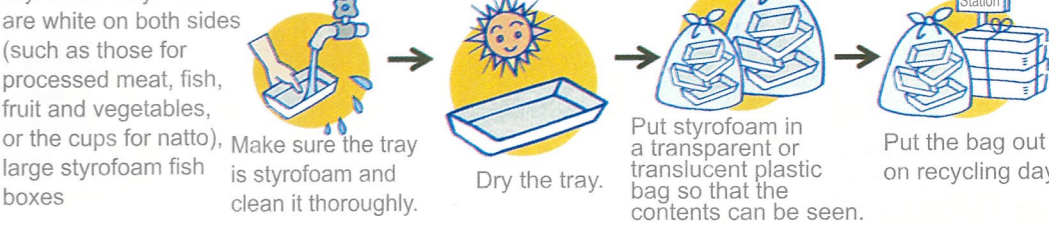
Disposal of plastic bottles Plastic drink bottles, alcohol bottles, soy/mirin/mentsuyu plastic sauce bottles



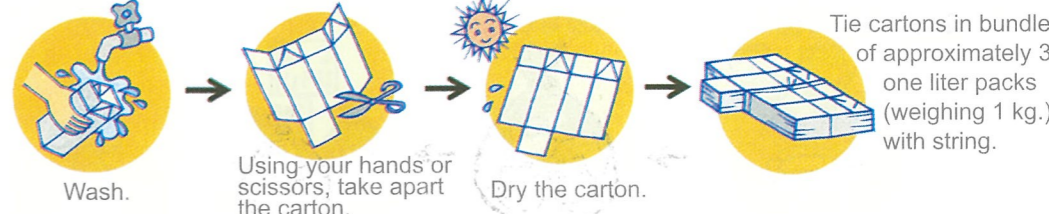
Disposal of other plastic containers/wrappers Egg cartons, shampoo bottles, cup noodle cups, coloured and transparent trays, mayonnaise tubes, bread and candy wrappers, plastic bottle caps, plastic wrap



Disposal of styrofoam/white foam trays/meat and fish foam trays



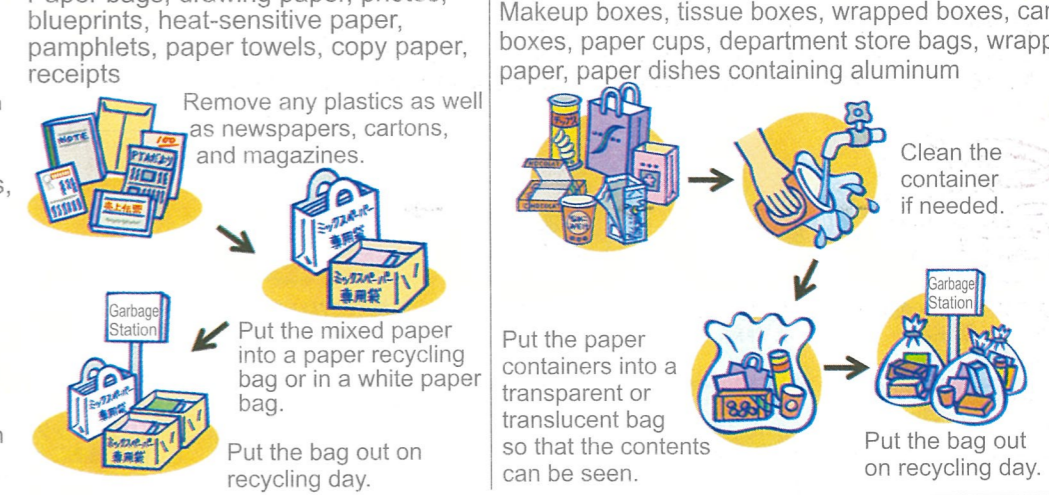
Disposal of cartons Milk cartons, juice cartons, and other beverage cartons



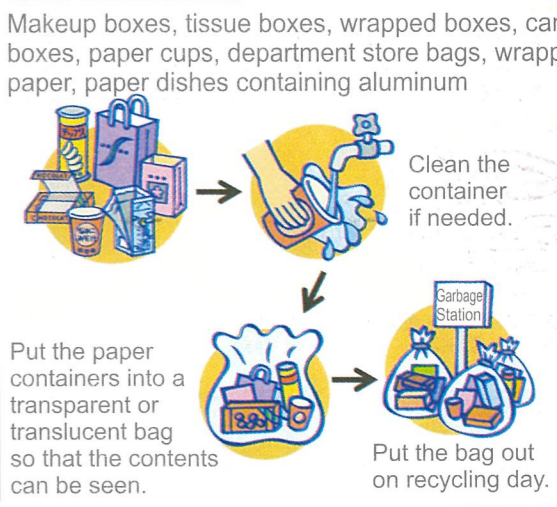
Disposal of cardboard boxes, newspapers, flyers, and magazines (Make sure they are dry.)



Disposal of mixed paper



Disposal of other paper wrappings and containers



Other Monthly

On the last recycling day of the month the following items will be picked up from the garbage station.

- Dead batteries: Manganese dry cell batteries, alkaline dry cell batteries, mercury cell batteries, lithium batteries. Put batteries in a clear bag so the contents can be seen and put them out on recycling day.
- Nickel cadmium batteries: Rechargeable nickel cadmium batteries are labeled differently and may be recycled at an electronics store or be dropped off in a battery box at the Niseko town hall.

Toxic Waste

Please put fluorescent tubes and mercury thermometers in a clear bag so that their contents can be seen and put them out on recycling day.

Oversized Garbage **Contact us any time**

For disposal of large items, please contact these businesses.

Tsukakoshi Industry Ltd. 0136-44-2630
Nakano Industry Ltd. 0136-58-2755
Takayama Electric Ltd. 0136-44-2938

Garbage that cannot be collected by the town

Please consult vendors for disposal of the following items: vehicle tires, waste oil, pesticides, paint cans with the contents still inside, propane gas cylinders, fire extinguishers, home oil tanks or drums, (unrecyclable) batteries, fridges, washing machines, TVs, air conditioners (home electronics should be recycled), personal computers.

Regarding use of the Recycling Storage Vault

If you have any difficulties, please contact the Recycling Storage Vault. (1) Hours of operation: Daily 9:00AM - 5:00PM (excluding the New Year holidays (Dec. - 5th Jan))

Notice: Please do not bring regular garbage or oversized garbage to the facility.